

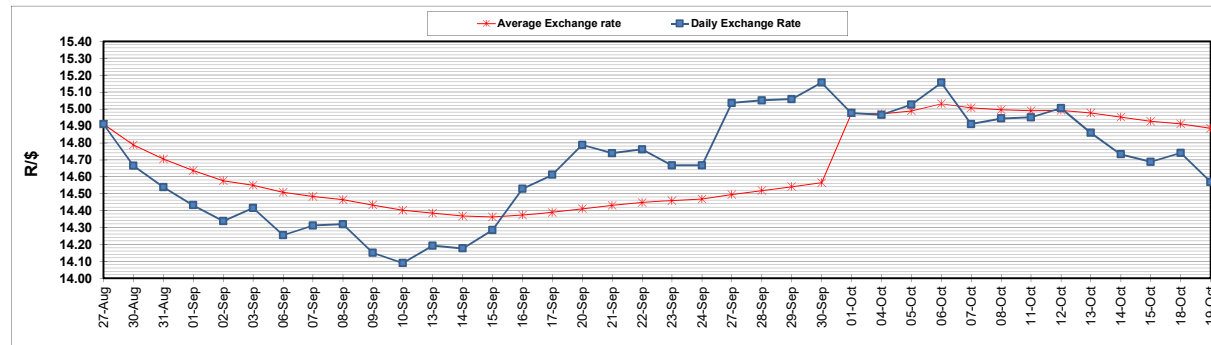
	PETROL 95 ULP	PETROL 93 ULP & LRP	DIESEL 0.05%	DIESEL 0.005%	ILL. PAR.
GAUTENG PUMP PRICE (SA c/l) AS FROM 06/10/2021	1,833.000	1,811.000	-	-	-
WHOLESALE PRICE (SA c/l) AS FROM 06/10/2021	-	-	1,571.780	1,575.180	980.488
SINGLE NATIONAL MAXIMUM RETAIL PRICE	-	-	-	-	1,240.000
BASIC FUEL PRICE - 19/10/2021 (SA c/l)	941.155	918.849	914.119	917.820	907.868
PRESS RELEASE CONTRIBUTION TO BFP 06/10/2021 - 19/10/2021 (SA c/l)	818.310	806.310	771.630	775.030	767.128
UNIT OVER/(UNDER) RECOVERY - 19/10/2021 (SA c/l)	(122.845)	(112.539)	(142.489)	(142.790)	(140.740)
AVERAGE BASIC FUEL PRICE 01/10/2021 - 19/10/2021	923.548	908.105	909.938	913.634	903.634
AVERAGE UNIT OVER/(UNDER) RECOVERY 01/10/2021 - 19/10/2021	(105.515)	(101.380)	(144.077)	(144.373)	(143.891)

ANALYSIS MOVEMENT OF AVERAGE OVER/(UNDER) RECOVERY

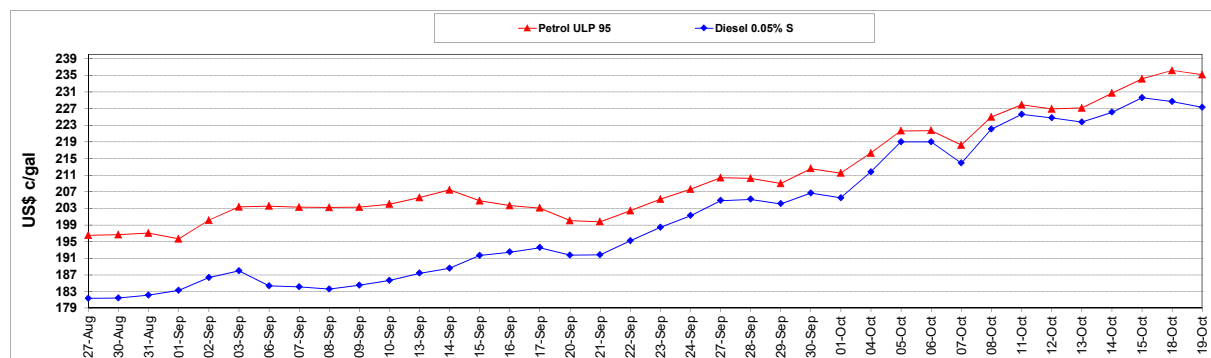
	PETROL 95	PETROL 93	DIESEL 0.05%	DIESEL 0.005%	ILL. PAR.
- MOVEMENT IN INTERNATIONAL PRODUCT PRICES	(85.612)	(81.810)	(124.468)	(124.684)	(124.418)
- MOVEMENT IN EXCHANGE RATE	(19.903)	(19.570)	(19.609)	(19.689)	(19.473)
AVERAGE UNIT OVER/(UNDER) RECOVERY 01/10/2021 - 19/10/2021	(105.515)	(101.380)	(144.077)	(144.373)	(143.891)

R/\$ EXCHANGE RATE - (R/\$14.5690 - 19/10/2021)

EXCHANGE RATE USED IN BASIC FUEL PRICE



INTERNATIONAL PRODUCT PRICES OF BASKET USED IN BASIC FUEL PRICE



BASIC FUEL PRICE IN SA CENTS PER LITRE

